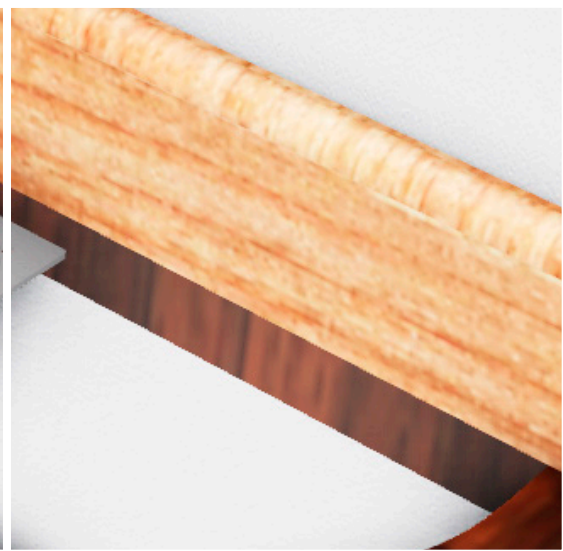




We make your life easy!

**SMART
SOLUTIONS**



Henco – We provide the solution you need!

Wall mounted bracket

This 3 mm full steel galvanized bracket can be used for different applications: shower & bath faucets, under sink mounting and robust anchoring behind plaster wall framework. It has the following specifications:

- ▶ Robust steel bracket
- ▶ Rigid wall attachment
- ▶ Accurate interaxis fixation
- ▶ Various depths for concealed mounting
- ▶ Free choice of any backplate fitting



PLP-P-PK

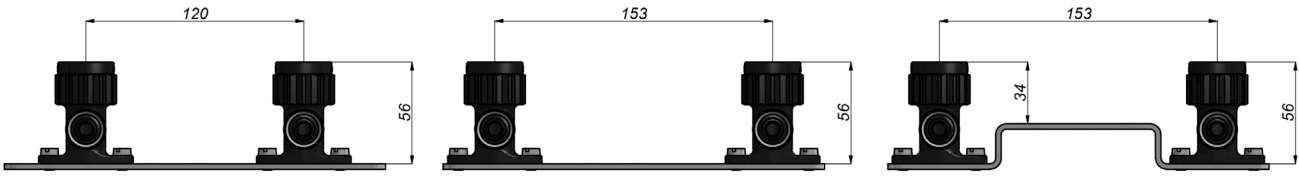
Centre-to-centre distance 153 mm

PLF-P-PK

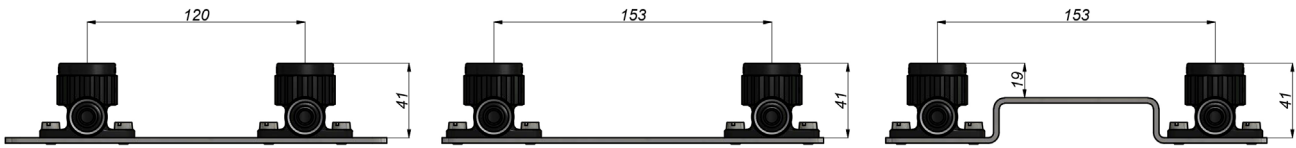
Center-to-centre distance 120 mm
and 153 mm

Possible combinations

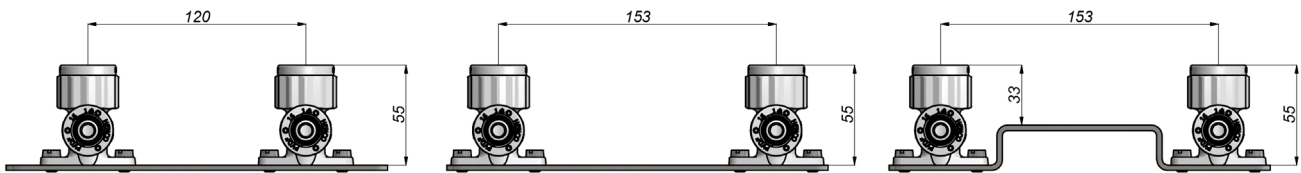
2PK / 2PKW



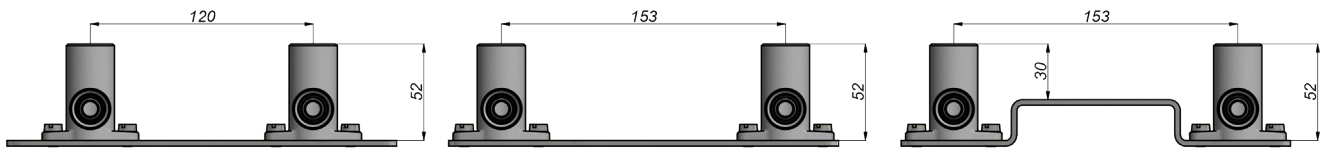
2PK-K



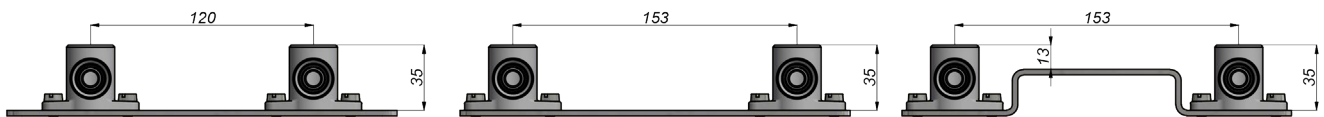
2SK



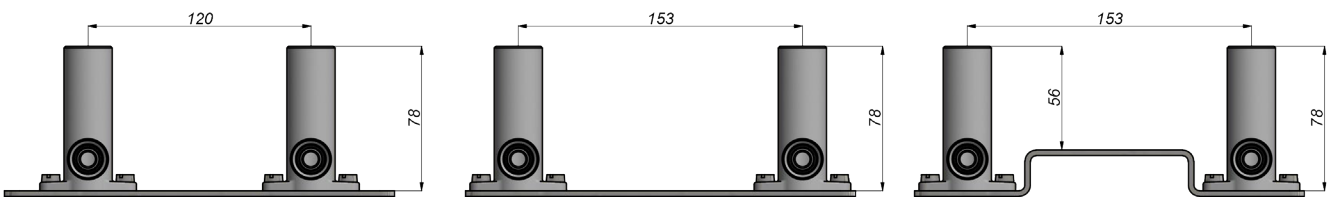
2P



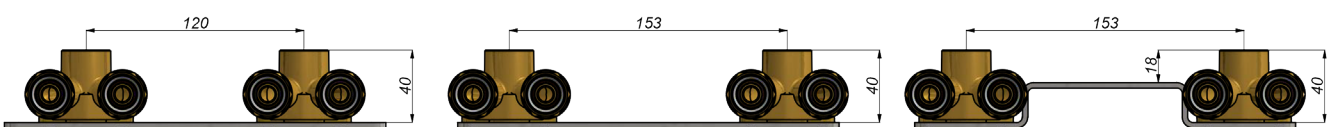
2P-K



4P

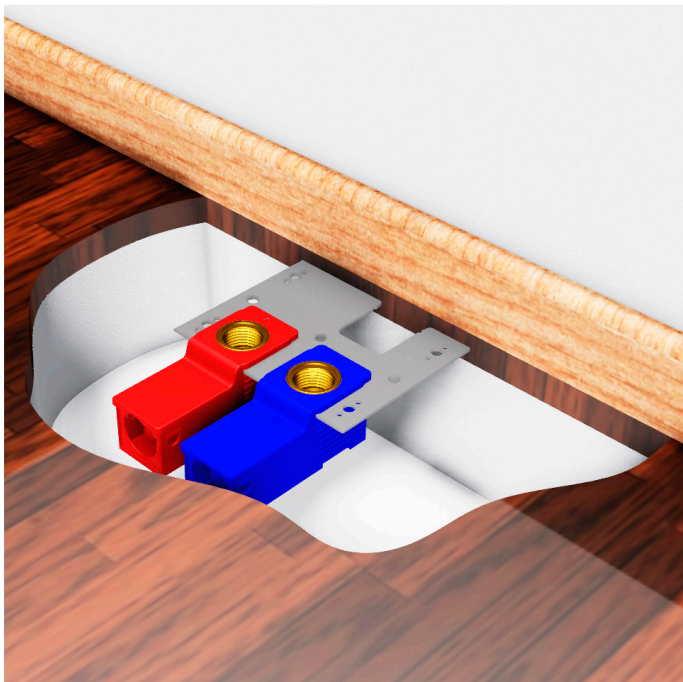


3P-VK



Wall box

- ▶ High-quality corrosion-proof built-in box made of plastic
- ▶ Box in a neutral colour with a blue and red cover
- ▶ Small dimensions for easy grinding (95x33x40 mm)
- ▶ Can also be easily combined with drywalls on steel profiles
- ▶ Homogeneous closure for installation in masonry or plastering
- ▶ Fitted with a groove to hold the pipe sleeve in place and ensure connection to the pipe
- ▶ The built-in box can be opened quickly and easily
- ▶ The pipe and coupling can be easily accessed without damaging the wall
- ▶ Suited for heating and sanitary applications
- ▶ Corrosion-proof, for a perforated steel mounting bracket
- ▶ Inter-axis distances of 40, 50, 80, 120 and 153 mm, indicated on the mounting bracket
- ▶ Ready for all common H-blocks and sanitary faucets
- ▶ Handy mounting rail available as accessory for hollow drywalls or floor levelling screeds
- ▶ Available in 16 and 20 mm press fitting and 16 mm screw fitting



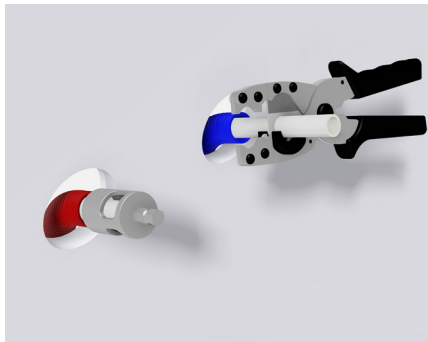
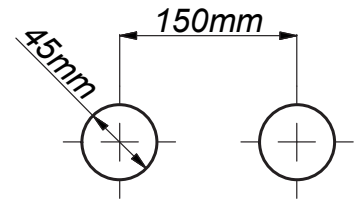
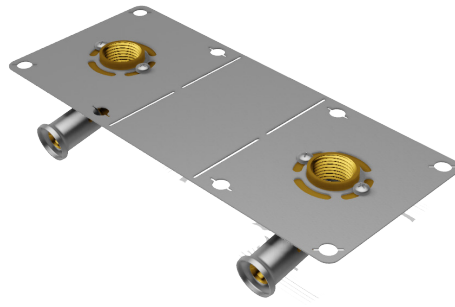
Accessory

Plug

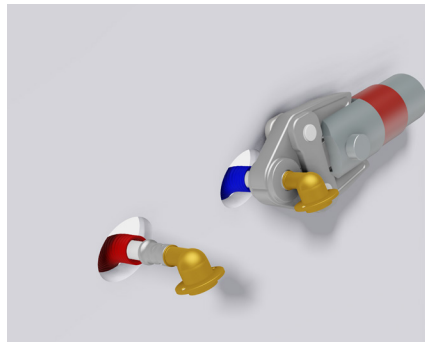


Hencofix: plaster wall mixing valve mounting bracket in Ø16 and Ø20

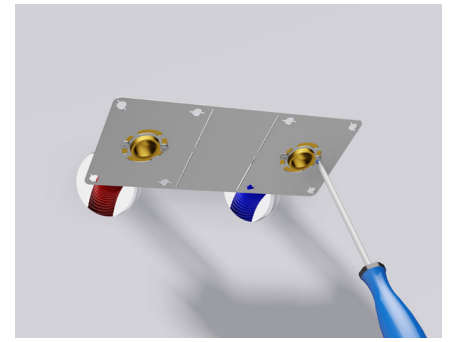
- ▶ Plate in stainless perforated steel (to switch the double-platinum, into single plates). A single reference for two configurations, optimizing your stocks.
- ▶ Connection with new incline for better implementation when fixing partition.
- ▶ Brass press fitting in one piece, for a perfect connection.
- ▶ fitting in diameter 20x1/2" for showerhead with high flow. Exists also in diameter 16x1/2"



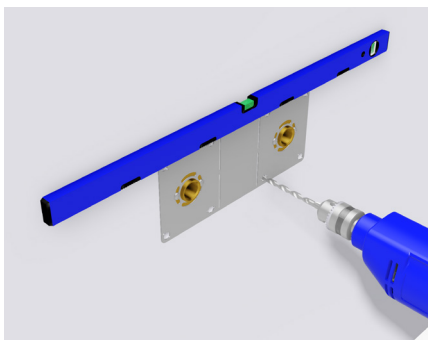
Cutting and calibrating the tubes.



Pressing.



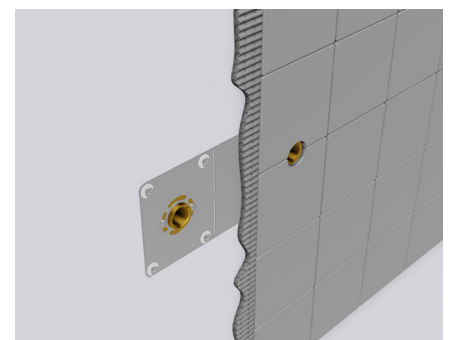
Securing elbows in plate.



Drilling holes.



Securing plate on wall.



Ready for finishing.



WE CARE TO CONNECT

